



**PRODUCT
CATALOGUE**

INTRODUCTION

Vula Namibia is a rapidly expanding business in an established industry and is renowned for delivering high quality products and service excellence. No requirement is too small or too large to satisfy the needs of our valued customers.

Vula Namibia is a 100% Namibian owned company and supplier of precast concrete products. Our products are locally manufactured at our factory in Windhoek and distributed throughout Namibia. All our products, where applicable, carry the South African Bureau of Standards mark of approval and are recognized by the Namibian Standards Institution.

Vula Namibia is totally committed to customer service satisfaction and delivering quality precast products within limited lead times and at reasonable cost. Our unique combination of modern factory facilities, people skills, design expertise and manufacturing experience allow us to carry enough stock in order to satisfy the needs of our valued customers.



PRODUCTS

Storm water Pipes Interlocking pipes Spigot & Socket pipes	4-5
Rectangular Portals Road application Rail application Culvert base slabs	6-7
Sewer Manholes	8-9
Precast Toilet Systems	10-11
Gabions & Guardrails	12-13
Cover slabs	14
Cover and frame	14
Garden products Pavers Pebbles	14
Kerbs, channels & drains	15
Bridge beams	15
Special Items Electrical Trench Covers Bollards New Jersey Barriers Parapets & Balustrades Cattle & Sheep trough Bus shelters Retaining walls Stair treads and landings Heavy duty wall	16-17

SERVICES

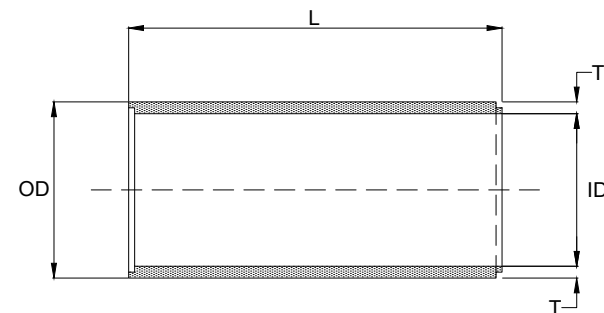
Transport	18-19
------------------	-------

INTERLOCKING JOINT PIPES TO SPECIFICATION SANS 677

The 1350mm and 1500mm ND Pipes are available on special order.

Mass per meter is an approximation only - VULA Namibia cannot guarantee the exact mass as listed on this table.

All Interlocking Joint Pipes are 2.50m long.



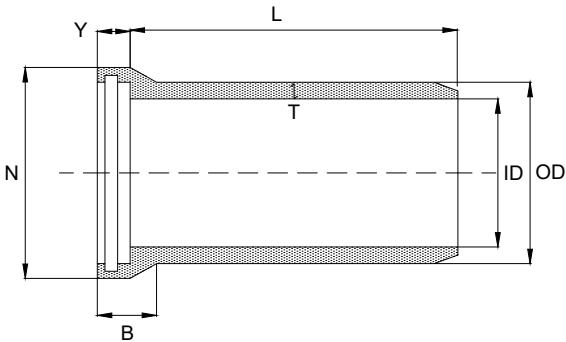
Pipe Class	Dimensions (mm)					Nominal Length (L) m	Approximate Mass	
	Nominal	Inside	Outside	Wall	Female		kg/m	kg/no
	Diameter (ND)	Diameter (ID)	Diameter (OD)	Thickness (T)	Socket (S)			
50D	450	445	533	44	17	2.5	186	465
	525	514	616	51	19	2.5	246	615
	600	611	699	44	19	2.5	306	765
	675	685	787	51	20	2.5	357	893
	750	762	870	54	20	2.5	377	943
	825	830	946	58	22	2.5	458	1,145
	900	913	1041	64	25	2.5	552	1,380
	1050	1060	1180	60	25	2.5	607	1,518
	1200	1190	1340	75	28	2.5	840	1,863
75D	450	445	533	44	17	2.5	186	465
	525	514	616	51	19	2.5	246	615
	600	611	699	44	19	2.5	306	765
	675	685	787	51	20	2.5	357	893
	750	742	870	64	20	2.5	450	1,125
	825	810	946	68	22	2.5	522	1,305
	900	893	1041	74	25	2.5	622	1,555
	1050	1040	1180	70	25	2.5	708	1,770
	1200	1170	1340	85	28	2.5	942	2,355
100D	300	292	362	35	17	2.5	98	245
	375	369	445	38	17	2.5	128	320
	450	445	533	44	17	2.5	189	473
	525	514	616	51	19	2.5	246	615
	600	587	699	56	19	2.5	313	783
	675	647	787	70	20	2.5	438	1,095
	750	718	870	76	20	2.5	538	1,345
	825	788	946	79	22	2.5	572	1,430
	900	869	1041	86	25	2.5	708	1,770
	1050	1000	1180	90	25	2.5	854	2,135
	1200	1150	1340	95	28	2.5	1035	2,588

SPIGOT & SOCKET PIPES TO SPECIFICATION SANS 677

The 1350mm and 1500mm ND Pipes are available on special order.

Mass per meter is an approximation only - VULA Namibia cannot guarantee the exact mass as listed on this table.

All Spigot and Socket Pipes are 2.50m long.



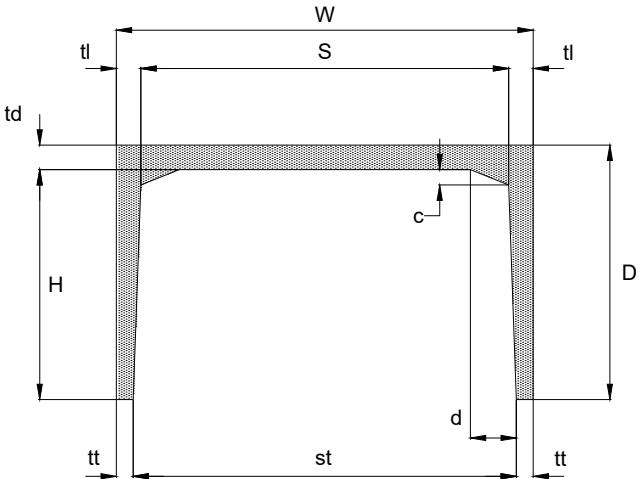
Pipe Class	Dimensions (mm)							Nominal Length (L)	Approximate Mass		
	Nominal	Inside	Outside	Wall	Socket						
	Diameter (ND)	Diameter (ID)	Diameter (OD)	Thickness (T)	Diameter (N)	Length (B)	Depth (Y)		m	kg/m	kg/no
50D	450	445	533	44	641	257	127	2.5	218	545	
	525	514	616	51	730	263	131	2.5	250	625	
	600	599	699	50	826	295	138	2.5	376	940	
	675	685	787	51	920	318	139	2.5	414	1,035	
	750	762	870	54	1016	329	139	2.5	468	1,170	
	825	818	946	64	1086	329	139	2.5	598	1,495	
	900	913	1041	64	1194	363	139	2.5	705	1,763	
	1050	1034	1194	80	1352	391	162	2.5	918	2,295	
	1200	1187	1365	89	1543	424	168	2.5	1080	1,863	
75D	450	445	533	44	641	257	127	2.5	218	545	
	525	514	616	51	730	263	131	2.5	250	625	
	600	585	699	57	826	295	138	2.5	376	940	
	675	673	787	57	920	318	139	2.5	414	1,035	
	750	738	870	66	1016	329	139	2.5	468	1,170	
	825	812	946	67	1086	329	139	2.5	598	1,495	
	900	869	1041	86	1194	363	139	2.5	705	1,763	
	1050	1004	1194	95	1352	391	162	2.5	918	2,295	
	1200	1157	1365	104	1543	424	168	2.5	1080	2,700	
100D	300	292	368	38	464	222	114	2.5	130	325	
	375	369	445	38	540	235	127	2.5	150	375	
	450	445	533	44	641	257	127	2.5	218	545	
	525	514	616	51	730	263	131	2.5	250	625	
	600	585	699	57	826	295	138	2.5	376	940	
	675	665	787	61	920	318	139	2.5	414	1,035	
	750	722	870	74	1016	329	139	2.5	468	1,170	
	825	780	946	83	1086	329	139	2.5	598	1,495	
	900	869	1041	86	1194	363	139	2.5	705	1,763	
	1050	986	1194	104	1352	391	162	2.5	918	2,295	
		1200	1127	1365	119	1543	424	168	2.5	1080	2,700

RECTANGULAR PORTAL CULVERTS

The Rectangular Portal Culvert is used in stormwater applications with high loadings, primarily in providing a waterway underneath roads and railway lines. The unit consists of a deck and two legs and is placed on a pre-cast or in-situ concrete base.

Mass per meter is an approximation only - VULA Namibia cannot guarantee the exact mass as listed on this table.

All Rectangular Portal Culverts are 1.20m long.



Nominal Size (mm)		Dimensions (mm)								Area	Class	Length	Approximate Mass	
S	H	W	D	St	td	tl	tt	c	d	m2		m	kg/m	kg/no
450	300	590	390	460	90	70	65	37	75	0.13	200S	1.2	263	316
450	450	590	540	470	90	70	60	37	75	0.20	200S	1.2	308	370
600	300	780	390	620	90	90	80	50	100	0.18	200S	1.2	319	383
600	450	780	540	630	90	90	75	50	100	0.27	200S	1.2	367	440
600	600	780	690	640	90	90	70	50	100	0.36	200S	1.2	446	535
750	300	950	400	770	100	100	90	50	100	0.22	175S	1.2	402	482
750	450	950	550	780	100	100	85	50	100	0.33	175S	1.2	480	576
750	600	950	700	790	100	100	80	50	100	0.45	175S	1.2	525	630
750	750	950	850	800	100	100	75	50	100	0.56	175S	1.2	604	725
900	300	1110	405	920	105	105	95	50	100	0.27	175S	1.2	496	595
900	450	1110	555	930	105	105	90	50	100	0.40	175S	1.2	554	665
900	600	1110	705	940	105	105	85	50	100	0.54	175S	1.2	617	740
900	750	1110	855	950	105	105	80	50	100	0.67	175S	1.2	692	830
900	900	1110	1005	960	105	105	75	50	100	0.81	175S	1.2	758	910
1200	450	1440	570	1220	120	120	110	50	100	0.54	150S	1.2	736	883
1200	600	1440	720	1240	120	120	100	50	100	0.72	150S	1.2	814	977
1200	900	1440	1020	1260	120	120	90	50	100	1.08	150S	1.2	970	1,164
1200	1200	1440	1320	1280	120	120	80	50	100	1.44	150S	1.2	1,133	1,360
1500	600	1770	735	1540	135	135	115	75	225	0.90	100S	1.2	1,043	1,252
1500	900	1770	1035	1560	135	135	105	75	225	1.35	100S	1.2	1,211	1,453
1500	1200	1770	1335	1580	135	135	95	75	225	1.80	100S	1.2	1,380	1,656
1500	1500	1770	1635	1600	135	135	85	75	225	2.25	100S	1.2	1,533	1,840
1800	600	2100	750	1840	150	150	130	100	300	1.08	75S	1.2	1,319	1,583
1800	900	2100	1050	1860	150	150	120	100	300	1.62	75S	1.2	1,512	1,814
1800	1200	2100	1350	1880	150	150	110	100	300	2.16	75S	1.2	1,691	2,029
1800	1500	2100	1650	1900	150	150	100	100	300	2.70	75S	1.2	1,856	2,227
1800	1800	2100	1950	1920	150	150	90	100	300	3.24	75S	1.2	2,009	2,411
2100	600	2430	765	2140	165	165	145	100	300	1.26	75S	1.2	1,612	1,934
2100	900	2430	1065	2160	165	165	135	100	300	1.89	75S	1.2	1,827	2,192
2100	1200	2430	1365	2180	165	165	125	100	300	2.52	75S	1.2	2,028	2,434
2100	1500	2430	1665	2200	165	165	115	100	300	3.15	75S	1.2	2,215	2,658
2100	1800	2430	1965	2220	165	165	105	100	300	3.78	75S	1.2	2,388	2,866
2100	2100	2430	2265	2240	165	165	95	100	300	4.41	75S	1.2	2,545	3,054
2400	900	2760	1080	2460	180	180	150	100	300	2.16	75S	1.2	2,184	2,621
2400	1200	2760	1380	2480	180	180	140	100	300	2.88	75S	1.2	2,409	2,891
2400	1500	2760	1680	2500	180	180	130	100	300	3.60	75S	1.2	2,621	3,145
2400	1800	2760	1980	2520	180	180	120	100	300	4.32	75S	1.2	2,817	3,380
2400	2100	2760	2280	2540	180	180	110	100	300	5.04	75S	1.2	3,003	3,604
2400	2400	2760	2580	2560	180	180	100	100	300	5.76	75S	1.2	3,174	3,809
3000	1200	3420	1410	3080	210	210	170	150	300	3.60	75S	1.2	3,235	3,882
3000	1500	3420	1710	3100	210	210	160	150	300	4.50	75S	1.2	3,493	4,192
3000	1800	3420	2010	3120	210	210	150	150	300	5.40	75S	1.2	3,735	4,482
3000	2100	3420	2310	3140	210	210	140	150	300	6.30	75S	1.2	3,967	4,760
3000	2400	3420	2610	3160	210	210	130	150	300	7.20	75S	1.2	4,184	5,021
3000	3000	3420	3210	3200	210	210	110	150	300	9.00	75S	1.2	4,576	5,491
3600	1200	4080	1440	3680	240	240	200	150	300	4.32	75S	1.2	4,174	5,009
3600	1500	4080	1740	3700	240	240	190	150	300	5.40	75S	1.2	4,472	5,366
3600	1800	4080	2040	3720	240	240	180	150	300	6.48	75S	1.2	4,775	5,730
3600	2100	4080	2340	3740	240	240	170	150	300	7.56	75S	1.2	5,066	6,079
3600	2400	4080	2640	3760	240	240	160	150	300	8.64	75S	1.2	5,326	6,391
3600	3000	4080	3240	3800	240	240	140	150	300	10.80	75S	1.2	5,808	6,970

PRECAST BASE SLABS

In instances where time-critical installations of culvert crossings are required, the Precast Culvert Base Slab is an ideal solution. It is designed and manufactured to suit the Precast Concrete Portal crowns already manufactured by VULA Namibia, and is profiled to suit the culvert.

Generally, culvert base slabs are cast with joints that are not watertight so that any excess ground water pressure (which accumulates under them) is relieved.

Mass per meter is an approximation only - VULA Namibia cannot guarantee the exact mass as listed on this table.

All Precast Culvert Base Slabs are 1.20m long.



Span	Dimensions (mm)					Class	Length	Approximate Mass	
	A	B	C	D	E		m	kg/m	kg/no
450	680	440	120	95	20	S	1.2	190	228
600	805	525	140	95	20	S	1.2	248	298
750	1000	740	130	100	25	S	1.2	312	374
900	1250	880	185	110	30	S	1.2	381	457
1200	1600	1180	210	130	30	S	1.2	554	665
1500	1950	1470	240	165	25	S	1.2	753	904
1800	2300	1780	260	180	25	S	1.2	973	1,168
2100	2480	2090	190	165	25	S	1.2	1,228	1,474
2400	2810	2390	205	180	25	S	1.2	1,508	1,810
3000	3470	2990	240	215	25	S	1.2	2,143	2,572
3600	4130	3590	290	250	25	S	1.2	2,891	3,469

REINFORCED MANHOLE RINGS TO SABS SPECIFICATION SANS 1294

Mass per meter is an approximation only - VULA Namibia cannot guarantee the exact mass as listed on the table.

CHAMBER SECTIONS					
Nominal Diameter	Outside Diameter	Inside Diameter	Wall Thickness	Length	Mass
mm	mm	mm	mm	mm	kg/unit
750	860	750	55	500	189
	860	750	55	250	95
1000	1130	1000	65	1000	590
	1130	1000	65	500	295
	1130	1000	65	250	148
1250	1400	1250	75	1000	876
	1400	1250	75	500	438
	1400	1250	75	250	219
1500	1670	1500	85	1000	1100
	1670	1500	85	500	550
	1670	1500	85	250	275

* Chamber sections available with or without steps inside

COVER SLABS					
Type	Nominal Diameter	Outside Diameter	Reduce	Thickness	Mass
	mm	mm	to	mm	kg/unit
M / H Duty	1000	1130	560	150	265/271
M / H Duty	1250	1400	560	150	491
M / H Duty	1500	1670	560	175	914

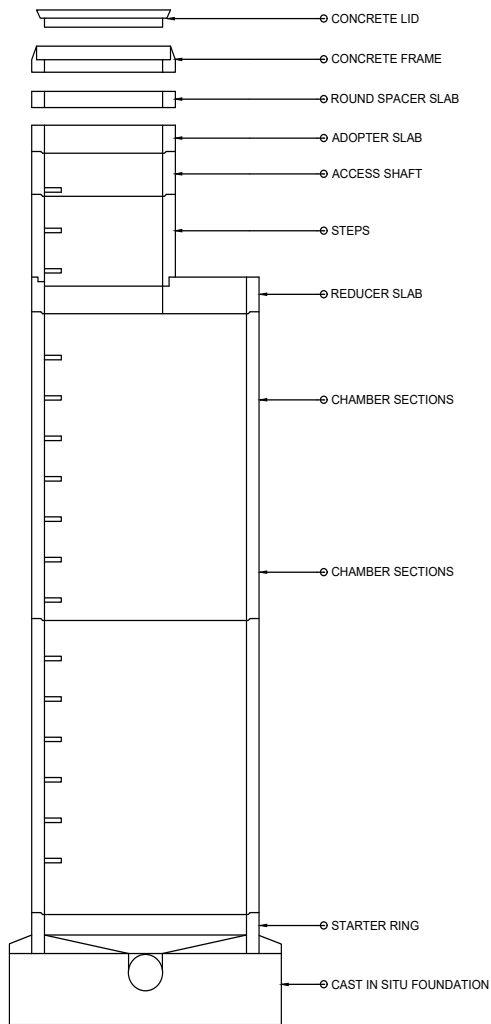
* Cover slabs can be ordered with or without steel insert

REDUCER SLABS					
Type	Nominal Diameter	Outside Diameter	Reduce	Thickness	Mass
	mm	mm	to	mm	kg/unit
Normal	1000	1130	750	150	234
Normal	1250	1400	750	150	397
Normal	1500	1670	750	175	810

ADAPTOR SLABS					
Type	Nominal Diameter	Outside Diameter	Reduce	Thickness	Mass
	mm	mm	to	mm	kg/unit
4A	750	860	-	150	149
Round	750	860	560	150	114
Spacer	750	800	560	75	45

MISCELLANIOUS ITEMS					
Description					Mass kg/unit
Frame: 800mm - 770mm Dia with 560mm hole 130mm High					65
560mm Dia Medium Duty Concrete Lid					85
560mm Dia Heavy Duty Concrete Lid					82
6 Way Base: 6 x 160mm Dia knockouts					701

* Lockable Concrete Lids available on request



PRECAST TOILET SYSTEM

VIP TOILET STRUCTURE

The VIP Toilet Structure allows for easy handling and installation by both men and woman which is a key advantage in the point of use of such products within any informal/formal settlement.

An added key advantage of the VIP Toilet Structure is that it takes approximately 30 minutes to erect the top structure with 4 individuals whereby no mechanical equipment is required for construction. The unit can be easily dismantled and re-assembled and also easily converted the a water-borne system.



SOLID TOILET STRUCTURE

2.2m High x 1m Wide x 1.2m Depth
Total Weight 1.8 Tons with base and cubical



GABIONS BASKETS AND MATRESSES

Gabion is a welded wire cage or box filled with materials such as stone, concrete, sand, or soil. Gabions are partially flexible block construction used for slope stability and erosion protection in construction. Various types of gabions are constructed and used in different engineering constructions. We stock various sizes and types for any application.

Please contact us for technical assistance and more information.



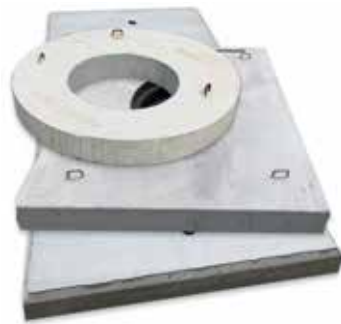
GUARDRAILS

Our comprehensive product range includes steel guardrails, end wings and accessories that are designed to SABS norms and standards. These are primarily road work products used by the various sectors of the Namibian government.



All these products are SABS approved. SANS 1350:-2005. Our products are designed according to customer specification whilst ensuring the highest quality and durability.

Please contact us for technical assistance.



COVER SLABS

Vula manufactures a large range of precast concrete slabs for a variety of uses. We can offer our customers a full range of services from design and manufacturing to transport and installation.



COVER & FRAME

We offer a wide range of covers and frames being used by municipalities, telecommunications companies and private civil engineering contractors nationwide. All our products are SABS approved.



KERBS

Our precast kerb inlets are manufactured to Municipality standards. Any figure type available on request.



CHANNELS

Our precast channels inlets are manufactured to Municipality standards. Any sizes available on request.

GARDENING PRODUCTS



PAVERS

Precast concrete pavers can be used in a variety of applications. You can use it to create beautiful outdoor paved areas to patios and attractive driveways.

Sizes available:

300x300
400x400
500x500



PEBBLES

Add a beautiful aesthetic to your garden with your garden with our variety of landscaping pebbles. It helps retain water in the soil in sunny areas while preventing erosion. These pebbles can also be used as walkways. Various colours available.



DRAINS

We have a variety of drainage solutions available. Our modular system guarantees an uncomplicated installation.



BRIDGE BEAMS

Our precast bridge beams have superior initial and final concrete strength.

Available Designs:

I-Beam: Maximum span 50m - Height between 0.60 and 2.55m.

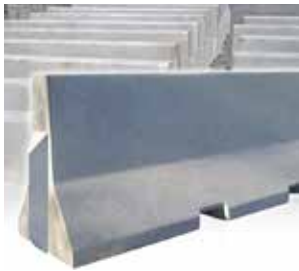
U-Beam: Maximum span 50m - Height between 0.60 and 2.55m

SPECIAL PRODUCTS



BOLLARD

Bollards serve as a barrier for pedestrians to protect them from stray vehicles and to control traffic flow. Bollards are often chosen to protect doorways, entries and pedestrians-only areas.



NEW JERSEY

Jersey barriers transportable concrete barriers created to divide lanes of traffic. Designed specifically to minimize damage to vehicles in case of accidental contact, whereas still preventing vehicle cross overs which could cause accidents. These barriers can also be used to reroute traffic and protect pedestrians and workers during road construction.



HEAVY DUTY WALL

Our heavy-duty walling offers privacy and security. These types of walls are mostly used for industrial purposes.



RETAINING WALL

Precast walls are ideal for creating retention and storage systems in residential, commercial, industrial and waste development. It is also used for Cladding, Security, Blast/Fire Walls, Agricultural applications.



BUS SHELTER

Purposefully made, our bus shelters provide a safe shelter from harsh weather conditions. Provided in a light grey concrete finish, these shelters can be painted for decoration or advertisement purposes.



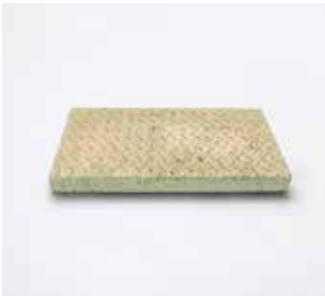
CATTLE & SHEEP TROUGH

Our water troughs are supplied with complete parts (float valve, legs and lid) and are suitable for cattle, sheep and goats.



STAIRS

Concrete landings are more durable and consistent in appearance because they have been cast and cured under controlled indoor conditions.



TRENCH COVER

Precast concrete are designed to protect electric conduits and cabling. Covering these is vital for pedestrian protection as well as to shield the cables from traffic.
Sizes: 740mm x 300mm x 100mm thick

OUR SERVICES

Vula Namibia provide road freight transport services including a variety of general cargo and goods between South Africa and Namibia, as well as local transport within Namibia.

Vula Namibia strive to earn the loyalty of our customers by providing affordable, one stop logistical, transportation and warehouse services that exceed customer expectations and offer excellent value.

TRANSPORT: CROSS BORDER

We provide transport services to our local and international clients for any bulk products cross border.

TRANSPORT: NAMIBIA

We provide transport nationwide to our Namibian clients.



CONTACT US

FARM 67 BELLERODE,
HOSEA KUTAKO AIRPORT ROAD,
FINKENSTEIN

BRENDAN BRITTEN: +264 81 790 5275
ROLAND DISHENA: +264 81 122 3150
OFFICE: +264 81 140 3850

sales@vula-namibia.com
sales2@vula-namibia.com
admin@vula-namibia.com