

# PRECAST BASE SLABS

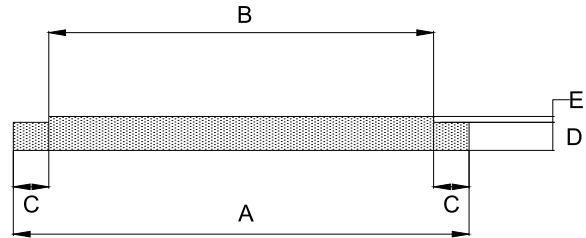
In instances where time-critical installations of culvert crossings are required, the Precast Culvert Base Slab is an ideal solution.

It is designed and manufactured to suit the Precast Concrete Portal crowns already manufactured by VULA Namibia, and is profiled to suit the culvert.

Generally, culvert base slabs are cast with joints that are not watertight so that any excess ground water pressure (which accumulates under them) is relieved.

Mass per meter is an approximation only - VULA Namibia cannot guarantee the exact mass as listed on this table.

All Precast Culvert Base Slabs are 1.20m long.



Span	Dimensions (mm)					Class	Length m	Approximate Mass	
	A	B	C	D	E			kg/m	kg/no
450	680	440	120	95	20	S	1.2	190	228
600	805	525	140	95	20	S	1.2	248	298
750	1000	740	130	100	25	S	1.2	312	374
900	1250	880	185	110	30	S	1.2	381	457
1200	1600	1180	210	130	30	S	1.2	554	665
1500	1950	1470	240	165	25	S	1.2	753	904
1800	2300	1780	260	180	25	S	1.2	973	1,168
2100	2480	2090	190	165	25	S	1.2	1,228	1,474
2400	2810	2390	205	180	25	S	1.2	1,508	1,810
3000	3470	2990	240	215	25	S	1.2	2,143	2,572
3600	4130	3590	290	250	25	S	1.2	2,891	3,469