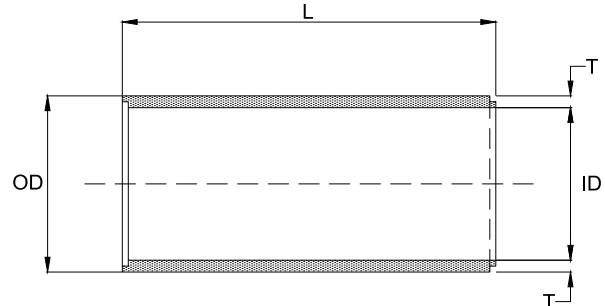


# INTERLOCKING JOINT PIPES TO SPECIFICATION SANS 677

The 1350mm and 1500mm ND Pipes are available on special order.

Mass per meter is an approximation only - VULA Namibia cannot guarantee the exact mass as listed on this table.

All Interlocking Joint Pipes are 2.50m long.



Pipe Class	Dimensions (mm)					Nominal Length (L) m	Approximate Mass	
	Nominal	Inside	Outside	Wall	Female		kg/m	kg/no
	Diameter (ND)	Diameter (ID)	Diameter (OD)	Thickness (T)	Socket (S)			
50D	450	445	533	44	17	2.5	186	465
	525	514	616	51	19	2.5	246	615
	600	611	699	44	19	2.5	306	765
	675	685	787	51	20	2.5	357	893
	750	762	870	54	20	2.5	377	943
	825	830	946	58	22	2.5	458	1,145
	900	913	1041	64	25	2.5	552	1,380
	1050	1060	1180	60	25	2.5	607	1,518
75D	1200	1190	1340	75	28	2.5	840	1,863
	450	445	533	44	17	2.5	186	465
	525	514	616	51	19	2.5	246	615
	600	611	699	44	19	2.5	306	765
	675	685	787	51	20	2.5	357	893
	750	742	870	64	20	2.5	450	1,125
	825	810	946	68	22	2.5	522	1,305
	900	893	1041	74	25	2.5	622	1,555
100D	1050	1040	1180	70	25	2.5	708	1,770
	1200	1170	1340	85	28	2.5	942	2,355
	300	292	362	35	17	2.5	98	245
	375	369	445	38	17	2.5	128	320
	450	445	533	44	17	2.5	189	473
	525	514	616	51	19	2.5	246	615
	600	587	699	56	19	2.5	313	783
	675	647	787	70	20	2.5	438	1,095
	750	718	870	76	20	2.5	538	1,345
	825	788	946	79	22	2.5	572	1,430
	900	869	1041	86	25	2.5	708	1,770
	1050	1000	1180	90	25	2.5	854	2,135
1200	1150	1340	95	28	2.5	1035	2,588	